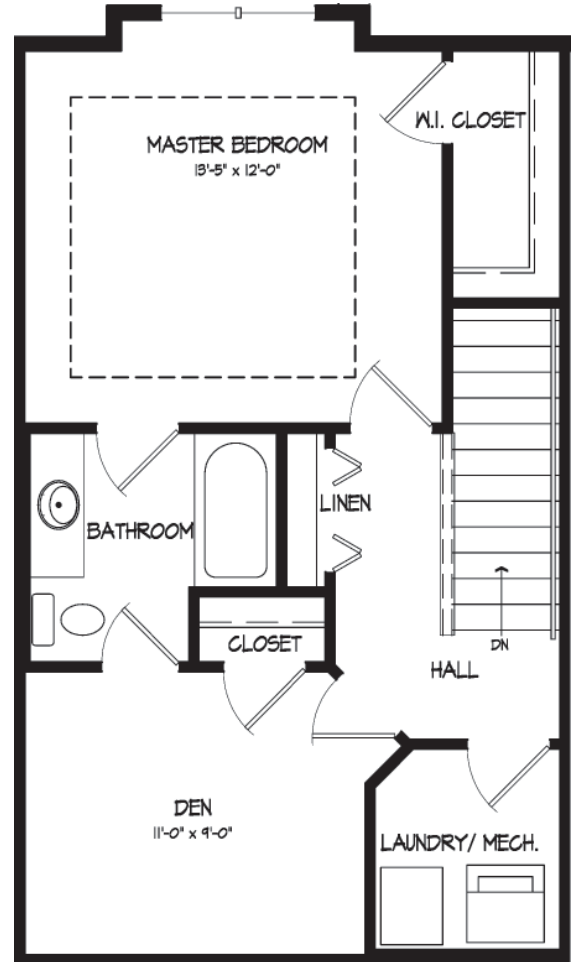
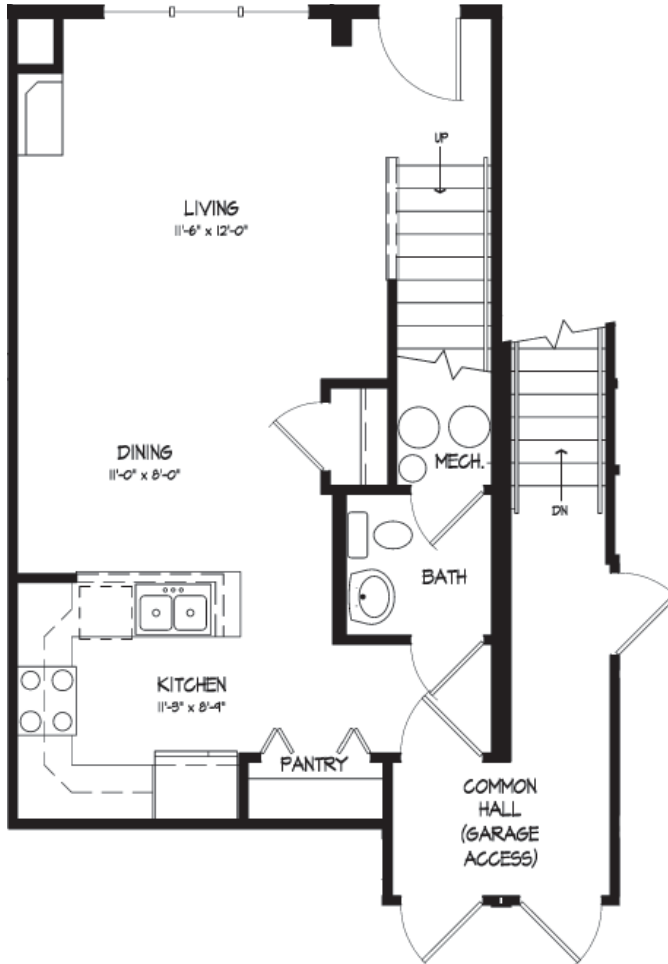


# Sawgrass at Prairie Oaks Condominiums

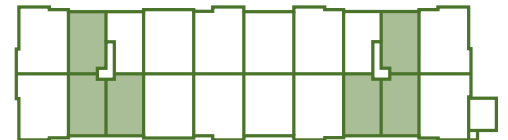
## Phase I Building

First Floor



Second Floor

Unit Type B  
 1105, 1107, 1109, 1129,  
 1133 & 1135 Enterprise Drive  
 1 Bedroom, Den, 1.5 Bath, 2 Parking Stalls  
 1,079 Square Feet



**Sawgrass Condominiums**  
 1101-1183 Enterprise Drive  
 Verona, WI 53593  
 608-354-0900

[www.horizondbm.com](http://www.horizondbm.com)  
 Note: Floor plans and some building features as shown are subject to changes during construction.

For More Information or  
 a Private Showing Contact:  
 Charlie Wills at 608-220-3282  
[willsc@firstweber.com](mailto:willsc@firstweber.com)  
 Stacy Ozanne at 608-358-4499  
[ozannes@firstweber.com](mailto:ozannes@firstweber.com)

